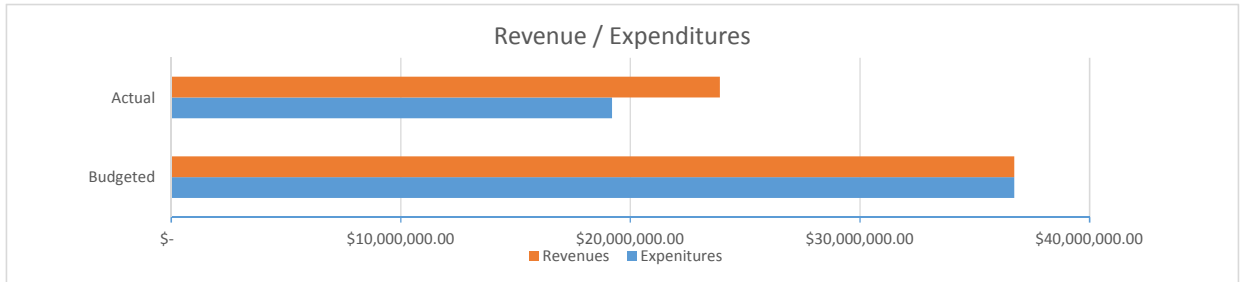


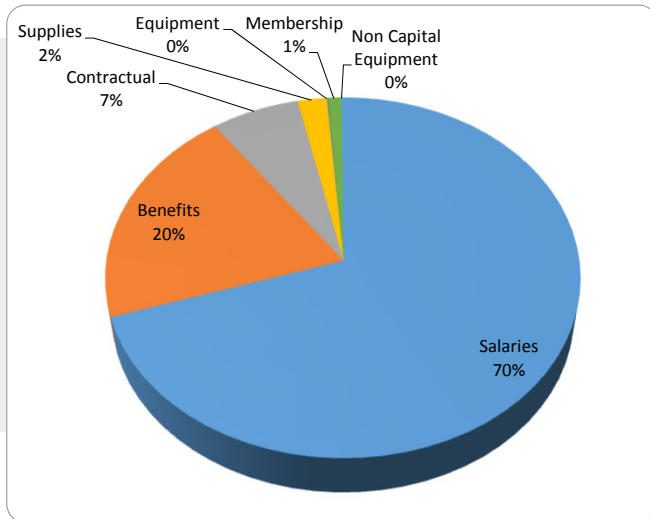
## NORTHERN SUBURBAN SPECIAL EDUCATION DISTRICT As of February 28, 2021



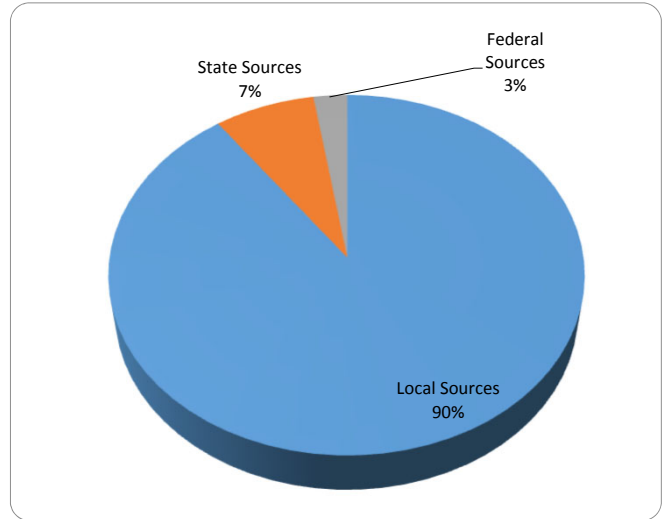
**NET: \$ 4,691,175.00 \***

\*Revenues reflect 75% of Annual Billing, Expenditures are 64%

### NSSED Actual Expenditures By Object



### NSSED Revenue by Source



### NSSED Cash Balance History

